

# H TIMING PULLEYS

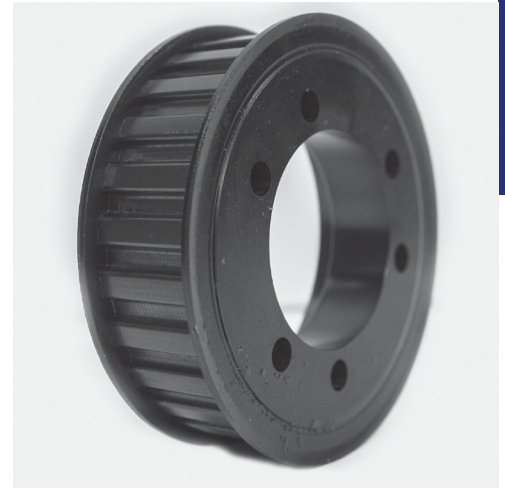
0.500" Trapezoidal Pitch

For 1" Wide Belts

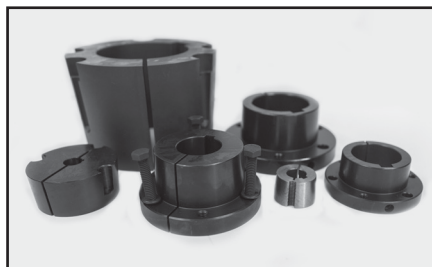
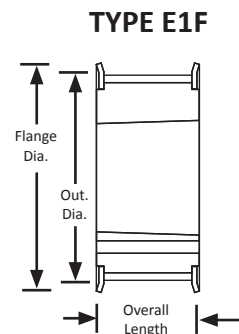
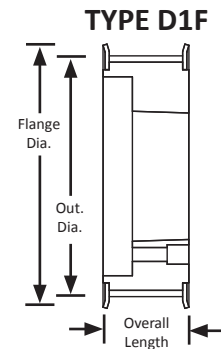
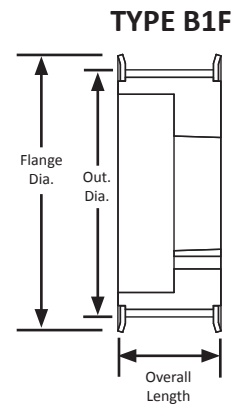
Steel/Iron

Black Oxide Plating

QD® Style



Part Number	No. of Teeth	Type	Pitch Dia. (in)	Out. Dia. (in)	Flange Dia. (in)	Bushing	Face Width (in)	Overall Length (in)
QD14H100	14	E1F	2.228	2.174	2.461	JA	1.312	1.312
QD16H100	16	E1F	2.546	2.492	2.780	JA	1.312	1.312
QD18H100	18	E1F	2.865	2.811	3.100	SH	1.312	1.312
QD19H100	19	E1F	3.024	2.970	3.256	SH	1.312	1.312
QD20H100	20	E1F	3.183	3.129	3.256	SH	1.312	1.312
QD21H100	21	E1F	3.342	3.288	3.574	SH	1.312	1.312
QD22H100	22	E1F	3.501	3.447	3.735	SDS	1.312	1.312
QD23H100	23	E1F	3.610	3.376	4.050	SDS	1.312	1.312
QD24H100	24	E1F	3.820	3.766	4.050	SDS	1.312	1.312
QD25H100	25	E1F	3.980	3.962	4.369	SDS	1.312	1.312
QD26H100	26	D1F	4.138	4.084	4.369	SDS	1.312	1.312
QD27H100	27	D1F	4.297	4.243	4.687	SDS	1.312	1.312
QD28H100	28	D1F	4.456	4.402	4.687	SDS	1.312	1.312
QD29H100	29	D1F	4.615	4.561	5.000	SD	1.312	1.312
QD30H100	30	B1F	4.775	4.721	5.000	SD	1.312	1.312
QD31H100	31	B1F	4.934	4.880	5.320	SD	1.312	1.312
QD32H100	32	B1F	5.093	5.039	5.320	SK	1.312	1.312



For matching QD® bushings, see page 372.